

From



To



The Art Cover Exchange Newsletter
Address all correspondence to: ACE #4, Dixie Glessner
P.O. Box 517 - Eustis, FL - 32727-0517

VOLUME II

JANUARY

NUMBER 3



HAPPY NEW YEAR 1987

SUGGESTIONS FOR NEW YEAR'S RESOLUTIONS FOR A.C.E. MEMBERS

I will try to answer every cover I get as promptly as possible.

During 1987 I will try to improve my talents by making and sending more covers than I did in 1986.

I will always remember to use commemorative stamps on my envelopes.

I will talk ACE to my friends and try to get at least one new member in 1987.

I will send birthday wishes to fellow ACE members.

I will welcome every new ACE member with a cover and short note.

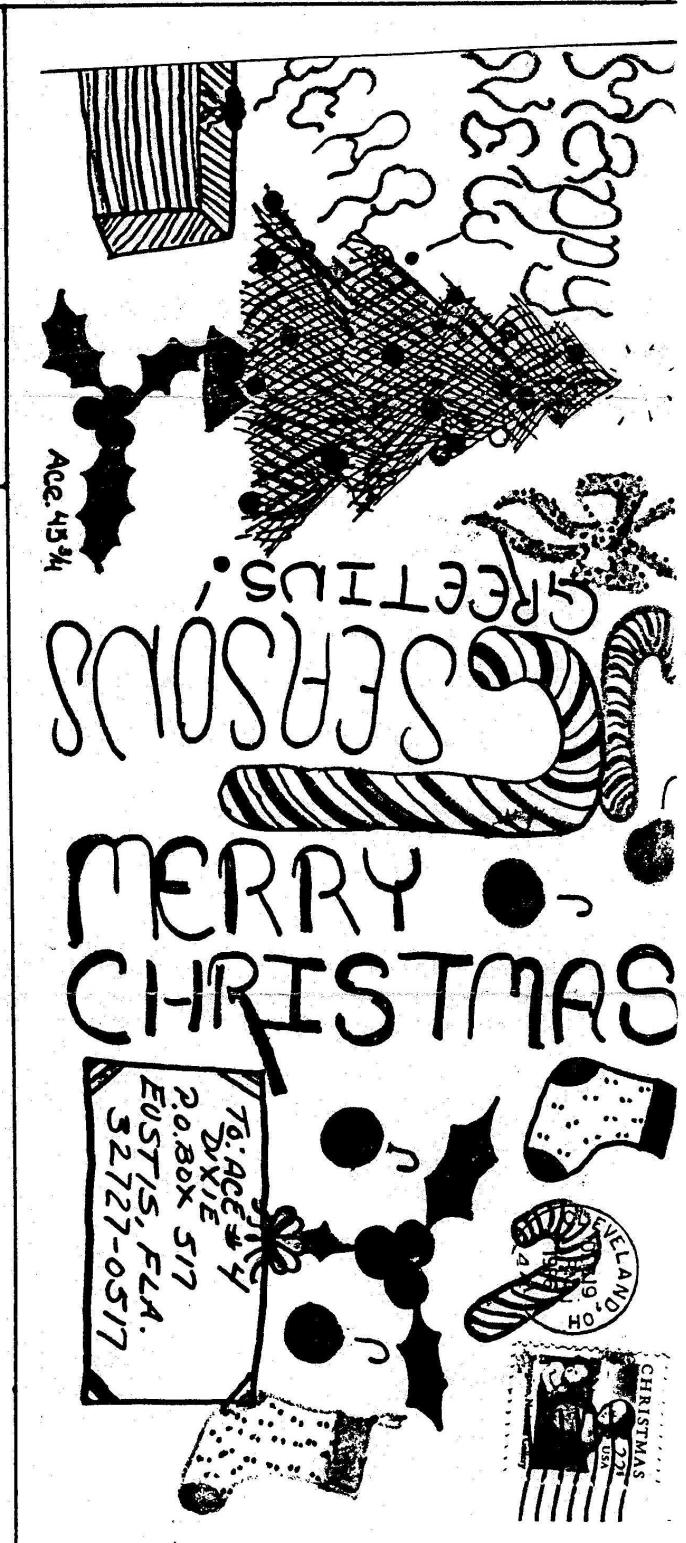
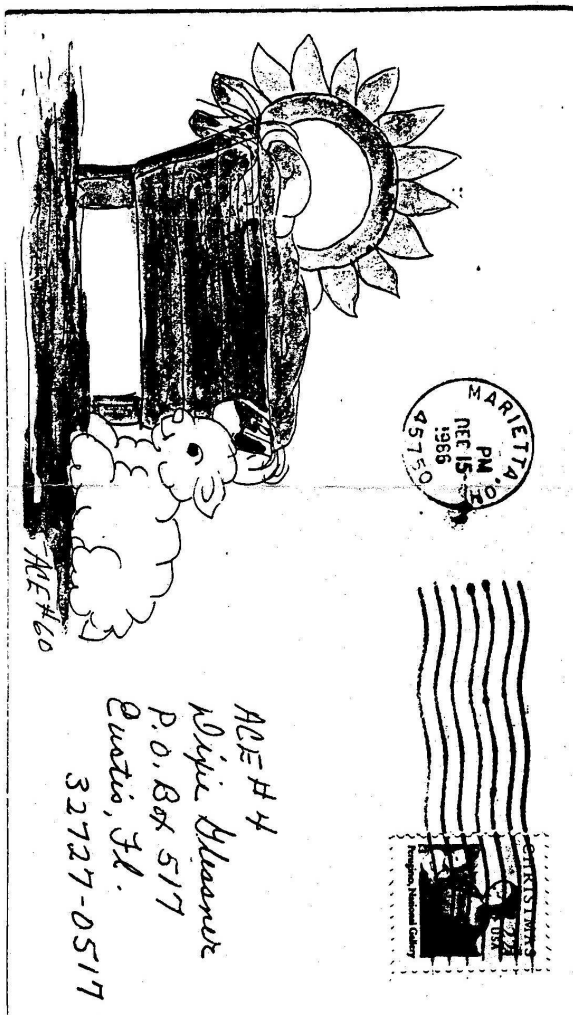
These are just a few new year resolutions that you may want to adopt as your own. You are welcome to use them, either one or all! As the beginning of another year is always a good time to start anew, we can all try to be better ACE members this year than we were in 1986. There are some who have gone way beyond doing their share of work and help with the club and also still manage to send out covers on a regular basis. For this we are eternally grateful. To each and every member we send our very best wishes for a new year rich in all the many gifts that money can't buy; good health, love, friendship, success and most of all faith for the future.

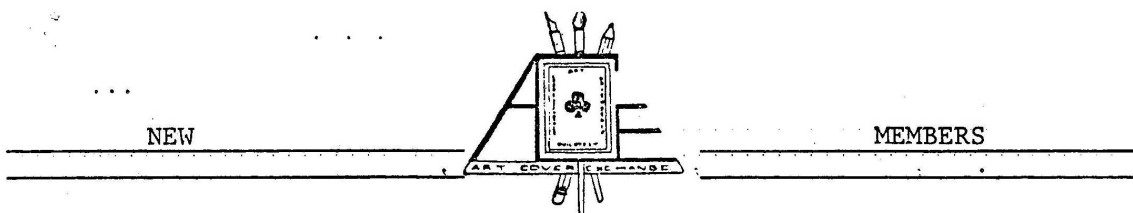


COVER(S) OF THE MONTH

This month's cover was a toss-up so we decided to choose two! The large cover, was sent in by #45 3/4, TARA DELGADO. She used an array of colors to make a bright, cheerful, Christmas cover. Well done, Tara, congratulations!

Our second cover was sent in by GLEN WOLFE, #60. Glen used pen and watercolors for his and it's on a beige envelope. Also very well done, Glen, and congratulations to you!!





NEW

MEMBERS

WELCOME !

#79 Ethel O. Howell
P.O.Box 669
Littlerock, Ca 93543
February 9

#80 David Ellis Garrett
49 Lodewyck
Mt. Clemens, Mi 48043
February 16

#81 Carol A Remmick
336 Lime Hollow Rd.
Verona, Pa 15147

#82 Ji Hyon Lee
1936 S. Conway Rd.
Apt. #5
Orlando, Fl 32806
May 5

#83 Phil Kelty
P.O. Drawer 740
Smith River, Ca 95567-0740
January 13

Happy Birthday!

Happy Birthday!

Happy Birthday!

| | | | |
|----------|------|---------|----------------|
| February | 6th | ACE #9* | Freddie Medley |
| " | 9th | ACE #79 | Ethel Howell |
| " | 16th | ACE #80 | David Garrett |
| " | 18th | ACE #63 | Terry Smith |
| " | 21st | ACE #43 | John Howell |
| " | 26th | ACE #15 | Stan Mavis |
| " | 27th | ACE #66 | Jamia Porter |

In March of 1987, there will be an international mail art exhibit in Washington, D.C. It will be held at the American Orthopsychiatric Association Convention, there will be an estimated attendance of 12,000. ACE #27, THOMAS WESTON, president of the PEACE COVER SOCIETY, would like anyone interested to send a PEACE THEME cover to his address, below, by February 15, 1987.

Send to: Du-Russel-Weston
2309 Medford
Ann Arbor, MI 48104

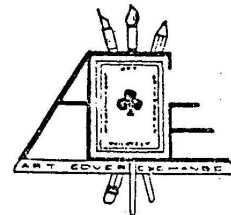
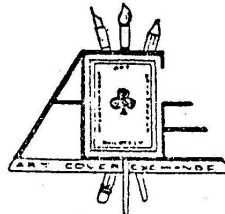
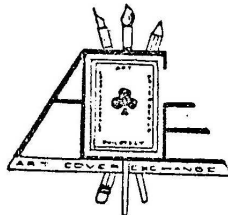
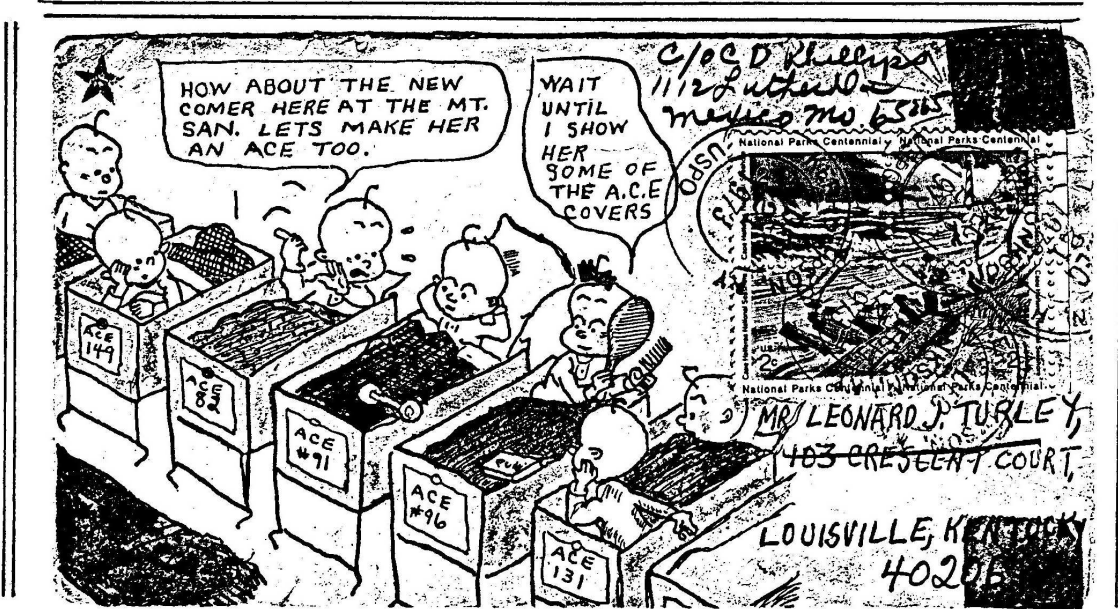
LET'S DO ALL WE CAN FOR PEACE ON OUR PLANET!!

NOTE*****

A REMINDER TO ALL MEMBERS WHO JOINED IN NOVEMBER 1986, AND HAVE NOT RENEWED THEIR MEMBERSHIP...YOU HAVE UNTIL THE END OF JANUARY TO DO SO, IF YOU ARE UNCERTAIN AS TO WHEN YOUR MEMBERSHIP IS UP, PLEASE LET ME KNOW.
DIXIE, ACE #4

FAVORITE COVERS FROM THE ORIGINAL A.C.E.

The cover below, was sent to Len Turley by ACE #109, Walt Czubay...the very same Walt Czubay in OUR club! In his letter, which was enclosed in this cover, Walt mentioned he had made several of these covers for members at Mt.San, this I think, was a hospital, and found the one below that wasn't used so sent it on to Len.



On the following two pages, is a letter from Len Turley, sent to B.R. McIntyre (ACE # 32's father). In it, he explains the rules of, what I call, a club within a club. Until we received this letter from Bruce, we had no idea of this "Double Circle" club. There were only 12 members in it out of quite a few from the ACE, it may have grown, but from reading the rules, I imagine only a select few participated, as they sounded fairly strict, especially when compared to our "nonexistant" rules of ACE today. Some of you may have run across covers with the double circle on the backs, so we thought you may be interested in this little known club.

.....

...

LOUISVILLE, KY.
263 Pennsylvania Ave.

Now I know that you had decided to make one of "The Grand Circuit" and am now in a position to report that we have twelve members who have agreed to go in with us for a period of one year. I attach a list of the twelve, as well as the numbers they will use for this circuit only. In addition, you will find the schedule I will ask you to follow as nearly as possible and a master schedule from which all of them were made.

You will note that you are asked to send out 25 covers between Feb. 26th, 1939 and Jan. 26th, 1940, and you should receive the same number between these dates. The first half of the double circuit is completed July 23rd, 1939 and the second half should finish about Jan 26th, 1940. I am a little late in getting these to you, but the schedules have been made up some time and I have been waiting to hear from everybody.

You will note that you are scheduled to send out a cover every two weeks, but you are not obliged to send it out on any certain day - you have two weeks from the day set down on the schedule to mail it.

If you prefer, you may work up the entire eleven covers for a half circuit at one time and mail them all out for the same event, but if you use this method, you should notify your eleven correspondents on or before the date scheduled, in order that they may know what to expect and won't think you are laying down on the job.

You were selected for this circuit because we knew you were fair-minded and that you did nice work. Therefore, we know you will always remember that someone is going to put in a lot of time and talent on the cover you receive in exchange for the one you are sending out, and be governed accordingly - that is, you will do your best to send out the kind of covers you like to receive.

In making up these schedules, I was careful to see that each member is scheduled to send out covers evenly spaced over the entire double circuit, but it was not possible for me to fix them up so each member would receive covers to evenly spaced - for example some may receive three or even four covers in a month and draw a blank in other months. It was quite a job for me to fix up this thing, as I'm not so hot in mathematics - don't go in for systems and figures much.

It is left with you as to whether or not you send out duplicates. I never make two covers alike - I don't like to draw the same thing twice, but I realize that some of you do, so if you prefer to make the same kind of cover for everybody, it will be O.K. There is one thing we don't want, however - and that is, covers made by any kind of duplicating device - we don't want Ditto, Transfers, Multigraph, Mimeograph, Block Prints or Printed Covers of any kind. We want hand drawn or hand painted covers only. I have many beautiful covers made by the linoleum block process and I really do think a lot of them, but in this circuit let's just swap hand-drawn and hand-painted covers only and get our printed covers through other sources.

In order to identify covers sent out in our circuit, suppose we put a double circle on the back of all covers in this circuit only, so (S) 1. In the first circle put your circuit number and in the second circle put the number of that particular cover. That is, if your number is '3', put a 3 in the first circle and on the very first cover you send out in this circuit put a 1 in the second circle and a 3 in the second circle on the second cover sent out and - so on. Don't use the "Double-Circle" on any covers except those within our circuit.

Keep all covers received through our circuit for at least a year and prepare to vote on your favorites next February for ribbons or prizes about which I will notify you later. You should send yourself a couple of "Double-Circle" covers sometime during the year. ~~Do not hope that no one will ever consider dropping out of the circuit before it is completed, but~~ if this should become necessary, be sure to notify me in time to get a successor for you, so that he may carry on with your schedule. Please notify me promptly of changes of address.

I hope that it will be possible for all of you to send out covers having some philatelic interest - first days, first flights, naval cancels, stamp pictures, illustrated postmarks, covers mailed from historical points on appropriate dates, etc. If this should be impossible use your own judgment and a good commemorative stamp.

Use a good grade envelope of standard size.

Surely hope that everyone enjoys his work and exchanges in this circuit and that all of us do our part.

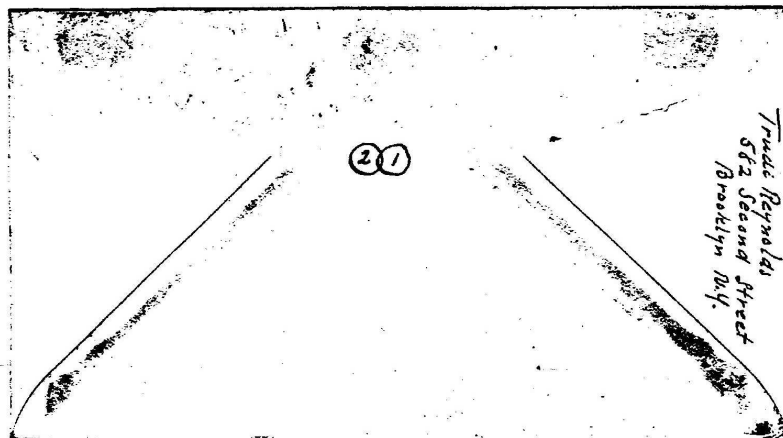
With best wishes, I am,

Very Sincerely,

Lon Turley

BELOW IS AN EXAMPLE OF A DOUBLE CIRCUIT COVER.

BENEATH THE COVER, ARE THE MEMBERS OF THE
DOUBLE CIRCLE CIRCUIT.



List of Members of The Double Circle Circuit.

1. George C. Schelter, Ace 213. Winter. - 914 E. Pine St., Clearwater, Fla.
Summer - 237 Pine Grove Ave., Rochester, N. Y.
2. Gertrude Reynolds. Ace 77, 582 - 2nd St., Brooklyn, N. Y.
3. Lloyd E. Siders, Ace 75, Route No. 4, Iowa City, Iowa.
4. M. Fay Mirdge, Ace 99, Box 144B, Browns Point, Tacoma, Wash.
5. Lewis E. Towers, Ace 66, Winter - 804 E. Turner St., Clearwater, Fla.
Summer - Mattawan, Mich.
6. Alma Coles, Ace 57, 604 2nd St., Brooklyn, N. Y.
7. Mar Yuan, Ace 81, Box 153, Livingston, Mont.
8. Mabel Hodapp, Ace 15, 1070 Eugene St., Indianapolis, Ind.
9. W. J. Marwick, Ace 5, 1029 S. E. 25th Ave., Portland, Oregon?
10. Boice V. Rider, Ace 8, 542 Baker St., Lansing, Mich.
11. B. R. McIntyre, Ace 88, Box 1404, Warren, Ohio.
12. L. J. Turley, Ace 1. 263 Pennsylvania. Louisville, Ky.

#11
MAC.



ACE-16

Don Garcia, Ace 16, 1st Cavalry Div. 4/11/12 - 12/77
PERSONALLY SPEAKING, York

TO THE UNITED ACES OF AMERICA AND ABOARD, Friday, 5th Dec 1966

RICK GARCIA, ACE 19 AND HIS LOVELY WIFE DONNA, WERE IN CINT. FOR A LOCAL CONVENTION, UPON WHICH MYSELF AND MY WIFE DENISE, WERE SO FORTUNATE TO MEET, ALSO WITH THE GARCIA'S WERE THEIR TWO FRIENDS JOYCE & SUSAN WHO ALSO JOINED US FOR DINNER AT A LOCAL RESTAURANT IN Cincy! DURING DINNER WE TALKED ABOUT ACE AND OTHER HOBBIES! THEN WE DECIDED TO TOUR NORTHERN KENTUCKY AND THE HISTORICAL POINTS OF INTEREST AROUND CINCINNATI! THE EVENING WENT SO FAST! I JUST WISH EVERYONE COULD HAVE BEEN HERE, SO BEING YOUR WRENT I'M ENCLOSED A PICTURE, THANKS DONNA & RICK FOR THE MEMORY, WE ENJOYED THE DINNER, LAULS & GOOD TIME WE HAD TOGETHER.

TIL NEXT TIME! Don #16



ACIE Cover Log _____/1987

| MEM. # | MEM. NAME | DATE REC. | COVER SUBJECT | MY COVER SUB | DATE SENT |
|-----------|--------------|--------------|------------------|-----------------|--------------|
| | | | | | |
| | | | | | |
| | | | | | |
| | | | | | |
| | | | | | |
| | | | | | |
| | | | | | |
| | | | | | |

NEED A WAY TO REMEMBER
WHO YOU RECEIVED COVERS FROM?
WHEN YOU SENT OUT! HERES
MY WAY!! TRY IT YOURSELF.

CHARLIE
ACE 20

#52
X

ACIE Cover Log JAN. '87/1987

#67
11

| MEM. # | MEM. NAME | DATE REC. | COVER SUBJECT | MY COVER SUB | DATE SENT |
|-----------|--------------|--------------|-----------------------|--|--------------|
| #52 | DKA - | 2 JAN | OWL / SWAMP | BROWNS HELMET CHIEF MAP - HIS. IS. - FOOTBALL | 5 JAN. R. |
| #52 | DKA - | 5 JAN | EYE INSURGE | BROWNS HELMET - 2 SUPER BOWL TICKETS | 7 JAN. R. |
| #17 | KC-J - | 5 JAN | Rice - | 3 KINGS DRAWING - 3 KING "DEV." | 6 JAN. P. 6 |
| #17 | KC-J - | 5 JAN | See Super Bowl FBI | 2 SUPER BOWL TICKETS BROWNS HELMET. | 6 JAN. P. |
| #52 | DKA - | 6 JAN | GOIN BEET. | BROWNS helmet stamp!! | 7 JAN. Va. |

LOCAL POST COLLECTORS SOCIETY

PO Box 669, Littlerock, CA 93543

APS Affiliate #126 Member COPO
President: Tadas Edelis Editor: Joseph J. Frasketi, Jr.
Secretary-Treasurer: John M. Howell, above address

Membership in LPCS is open to anyone interested in local posts. Many members have their own local post(s), but this is not a requirement of membership. THE POSTER, official publication of the society is issued six times per year. Each issue is mailed with a different local post by members of the society. Some of these are also postmarked with a Mailer's postmark.

THE POSTER has articles of interest to members including articles about local posts in the U.S. and foreign countries. An auction of donated materials is conducted through the pages of the Poster. Sample copies of The Poster are 50¢ postpaid.

A membership directory is issued periodically and shows collecting interests of members.

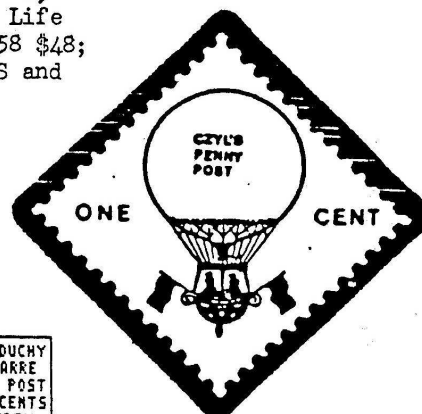
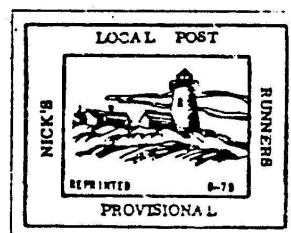
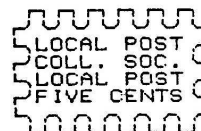
Volume One (1972) and Volume Two (1973) of The Poster have been edited and reprinted. They have profiles of U.S. and foreign local posts as well as illustration of local post stamps in use at that time. Price of each is \$3 (\$2 to LPCS members) postpaid. Make checks to LPCS and send to Treasurer.

"MODERN LOCAL POSTS IN THE U. S.", a booklet listing over 500 twentieth century local post of which over 100 are listed as active is available for \$1.50 (\$1 to LPCS members) postpaid.

Anyone may have a local post. No permit is required. Local post stamps should not resemble U. S. stamps. They should be placed on lower left or back of envelope. Any value (or no value) may be used on them. Any unit of money, real or fictitious may be used. Cancellations should not resemble U.S. postmarks.

New members get special covers and samples of local post stamps.

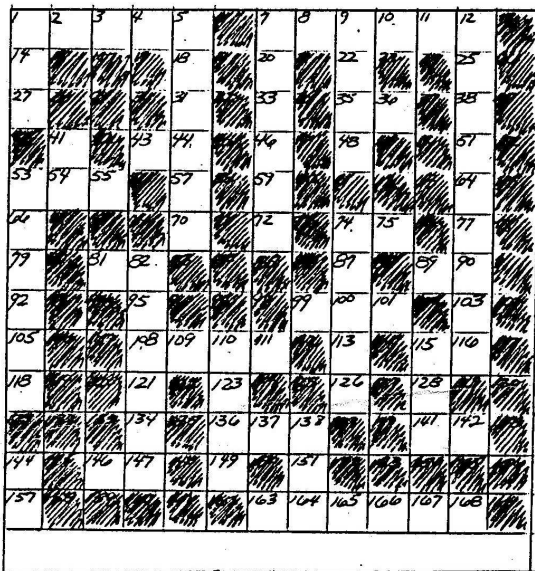
LPCS dues are \$4 per calendar year and there is a new member fee of \$1 in the U. S., Canada and Mexico. Foreign add \$2 surface or \$4 air mail. Members joining after October 1 should remit two years dues or specify membership is to start at the beginning of the next year. Members joining after the first of the year will receive all issues of The Poster for the year. Members paying \$1 to \$4 in addition to dues are listed as contributing members. Those paying \$5 or more are listed as supporting members. Life Membership for those 60 or over is \$40; age 59 \$44; age 58 \$48; age 57 \$52; 56 or younger \$55. Make checks payable to LPCS and send to the Treasurer, address above.



THE WORD PUZZLE

Do you know your fellow ACE's

USE YOUR MEMBERSHIP LIST



So... you enjoyed the first ACE X-WORD PUZZLE... Well, here's another!

THERES EVEN SOME CLUES IN THE COVERS BELOW!

NAMES, STATE ABBREVIATIONS, B-DAY MONTHS.

DOWN

- 1, ACE #16
- 5, ACE #28
- 7, ACE #22 or 2
- 9, ACE #58
- 12, CITY FOR ACE #13
- 41, — BOX
- 53, ACE #59
- 82, ACE #49
- 110, ACE #13
- 115, B-DAY FOR #16 or 53
- 138, ACE #69

ACROSS

- 1, ACE #4
- 7, ACE #16 or 21
- 35, STATE ABV. for ACE 2/ or 47
- 43, ACE #71
- 53, P.O. —
- 74, STATE ABV. for #66 or 16
- 81, " " " #20 or 60
- 89, " " " #52 or 17
- 99, " " " #51 or 58
- 108, ACE #19
- 115, ACE #33
- 136, B-DAY FOR #52 or 21
- 141, STATE ABV. for #39 or 61
- 146, " " " #44 or 28
- 163, ACE #69

