



FROM COVER TO COVER

ART COVER EXCHANGE NEWSLETTER

Address all correspondence to:

Editor

2206 Harvard Court, Ivy Estate, Riverview, FL 33569

Founder: Chris Glessner and Edith Medley

President: Don Mangus

Vice President: Warren Lange

Sec/Tra: Prof. Eggleston-Youssouppoff

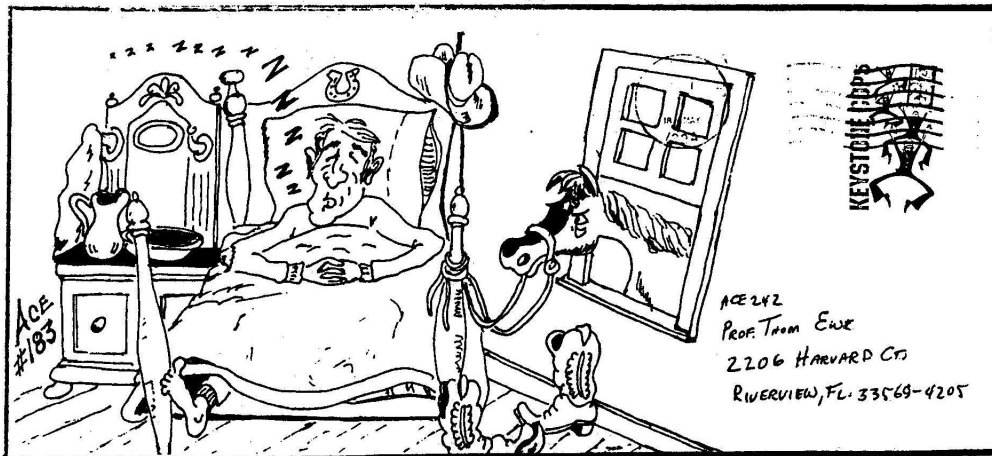
Editor: Prof. Eggleston-Youssouppoff

VOLUME VII

June 1994

NUMBER 68

COVER OF THE MONTH



ACE 183 - Cal Breaux of Groves, TEXAS.



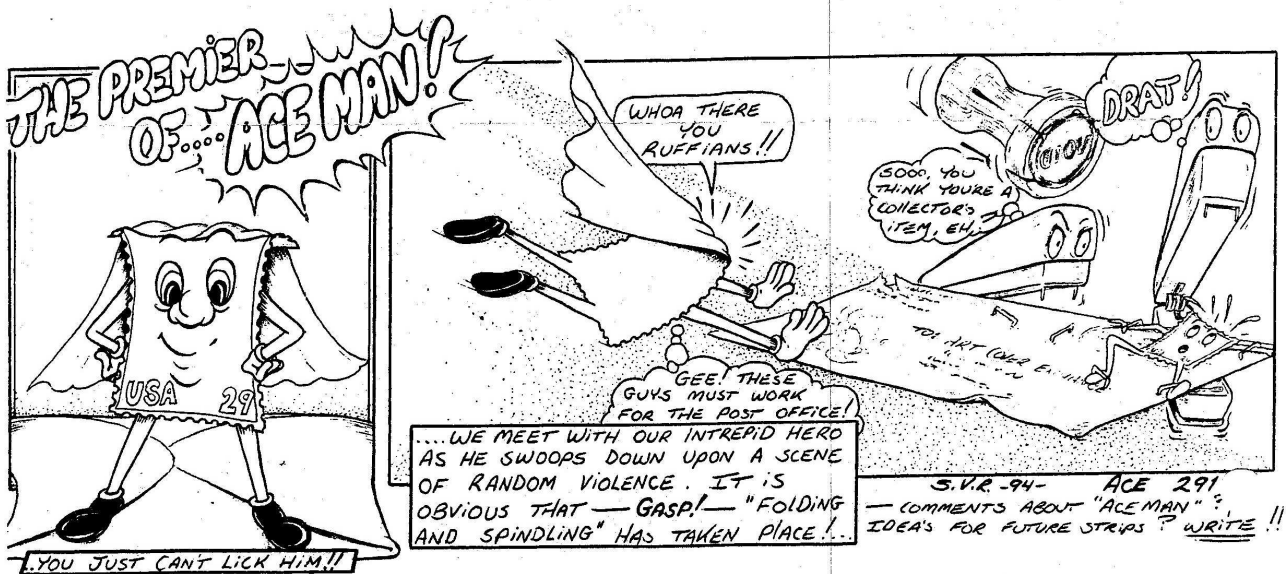
PRESIDENT'S CORNER

We have made a lot of progress in ACE, and we continue to grow. I am pleased to announce the start of a new comic strip for ACE - "ACE Man" by Steven Russell of Starke, Florida. Steven, ACE 291, is a new member and has created covers for our auction and volunteered to do ACE Man for the newsletter. Thanks.

Others to thank are Gary and Warren for the last contests or activities and assisting with the ACE Meeting in Haines City, FL. Prof. Thom for his continued work with the newsletter and the upcoming auction. All the members that sent in covers for the auction and for being active in ACE. Together, we can made a difference, and we are.

I am looking forward to seeing a lot of ACE members in Haines City for the ACE Meeting. If possible, please do attend. You are all a part of ACE and we need you.

ACE 20, Don Mangus, President



S.V.R-94- ACE 291
- COMMENTS ABOUT "ACE MAN" ?
IDEA'S FOR FUTURE STRIPS ? WRITE !!

ACE OFFICIAL NEWS

NEW MEMBER

ACE 295

Jan Sheetrum
"The Jan Yankee"
105 Hilly Village Road
Batesville, AR 70501

Sponsored by ACE 242.

A big welcome to Jan from the Land of Bobs of Billies to ACE. Jan has a colourful history - former deputy sheriff (?), postal worker, flea market operator, Lady's Lady and current AIDS Manager in Batgesville. Jan likes flowers, gardening, antiques, making interesting covers and folk art. She dislikes cats and Russian nobility - but welcome to ACE nevertheless - and let all flood her with covers. Note: The Jan Yankee is from her days as the Yankee Peddler. Want to know more about this interesting person? Write her! She is a special person.

ACE Meeting

The ACE Meeting of 1994 is

scheduled with the AFDCS Convention, Haines City, Florida. (Haines City is adjacent to Orlando.) The ACE Meeting has been scheduled for Saturday, June 25th, from 12:00 until 3:00 pm at the Grenlefe Resort in Haines City. Members planning on attending should attend the AFDCS Convention Show and pick up a program to find our which room is reserved for ACE. Here is a great chance for ACE Members to get together. ACE 259 has a surprise for those ACE Members who do attend.

GAD 94

Don't forget to get your vote in for the GAD target for 1994. Once a year, we select an ACE member to be the target, and flood him/her with ACE covers on the first of August. As of this date, only 15 votes have been received for 15 different ACE members. So get your ACE GAD vote in and break the current tie.

ACE DATA SHEET

Please return your ACE Data Sheet tout-de-suite.

HAPPY BIRTHDAY

Birthday wishes to the following ACE members:

ACE 247

Thomas Pomeroy - 19 June

ACE 286

Luk Brazle - 26 June

ACE 288

George Berdan - 16 June

SPECIAL EVENT COVERS

June has several events that might make an interesting commemorative cover.

10 June - CSA Maj Gen Forrest defeats USA BGen Sturgis at the Battle of Brice's Crossroads, MS in 1864.

18 June 1864 (about) Gen Grant begins the 10 month siege of Petersburg, Virginia.

19 June 1864. U.S.S.- Kearsarge sinks the C.S.S. Alabama.

19 June 1914 - the birth of Thomas Dole Pomeroy, ACE 247.

4 June 1944 - UK-USA forces entered Rome, Italy.

28 June 1942 - Eight German agents who landed from a submarine on Long Island were captured.

6 June 1944 - 4000 ships and over 10,000 aircraft landed allied forces on the coast of Normandy, France.

27 June 1944 - Allies enter Cherbourg

4 - 7 June 1942 - Japanese naval forces attack Midway Island.

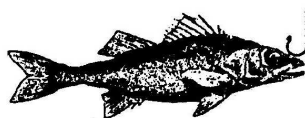
25 June 1950 - The invasion of South Korea by North Korea.

25 June 1994 - ACE Meeting in Haines City, Florida.

This should keep some of us busy for a few hours and create some interesting covers to send to fellow ACE members.

ACE MAN

A new super hero is born. June 1994 will be the start of ACE MAN in our monthly newsletter. Thanks to ACE 291, the brains and creator of ACE MAN. Thank you Steven Russell for going a little extra to assist ACE.



VICE PRESIDENT'S VIBES

A couple of months ago Prof Thom editorialized in the newsletter about participating in ACE activities. He made the poignant observation that when you are listed in the handbook, you are **REQUESTING** the exchange of covers, "based upon what information you gave him (a fellow member) in the handbook." Did you ever notice that a least half of the current membership do not solicit general covers, but list **specific interests**? Everything from "Baseball covers ONLY" to "Pomology" to "Zeps" are listed. If you are a regular exchanger, you know these interests. If not, how often do you cater to these special interests of members when soliciting a response? Speaking from experience, I have secured a least a half dozen additional correspondences by specifically sending them a cover which reflects their specific interests. Try it! It works!

Signing off: Warren,
ACE 256

The following was sent in by ACE 291.

Abbie Hoffman on a postage stamp. Yep! A stamp featuring the late radical giving an obscene salute was recently delivered by the USPS. But, it wasn't authorized. The Yippie Stamp and about two dozen other such stamps were made by a Manhattan artist and sold in an East Village bookstore. The New York Daily News reported. The paper did not release the name of the artist, but said it was a woman and that she has been creating the cinderella stamps for the past two years.

ACE 285, Kathleen Kerr, lives in Lynnwood, Washington.

ACE 246 Rudy Viol, lives in Brook Park, Ohio.

ACE 260, Tiny Dean, San Luis Obispo, CA.

When is the last time you wrote to these ACE members? Have you ever written to them? Well, its time you did - just send them a friendly cover and say "howdy". (random selection)

GO TELL IT TO THE MARINES

First, the ACE Auction of June 1994 is here. Attached to this newsletter is the auction listing and bid sheet. My thanks to the many ACE members that supported this auction through donations. Now its success is in your hands. Do bid and enjoy the great covers offered.

Second, I have written to several of you suggesting that you write an article for the newsletter. I am still waiting. If anyone would like to write an article for the newsletter, please feel free to do so and post to me. Thanks.

I would like to meet a lot of ACE members in Haines City in June. At present I am unable to attend. As you may know my motor car is now parked in an ash tray. Therefore, lacking transportation, I will be unable to attend the function.

There was an UFO Convention in Tampa this past week end, so the local area has been full of interesting people. I did not endear myself to a group of them I met in a club. They were talking about unearthly things, so I broke into their conversation and confessed that I was not born on terra firma. This got their attention, and I played it along as long as I could. After several questions as to my birth location, I had to tell them I am not sure (which is true), but confessed that it might be an air pocket over Hall, New York, or Philadelphia, or maybe Newfoundland. This was too much for them, so I finally confessed that my birth took place in an RAF Dakota aircraft flying somewhere between Prestwick, Scotland and Washington, D.C. Since I was not there when they landed for fuel in Ganger, Newfoundland, I suspect it was on the last leg of the flight. One of the UFO buffs suggested that I go to Pluto which I think is space talk for a more warmer location.

Keep in ACEing - always forward. ACE 242 - Prof Thom-Uwe

ACE 27

ACE member 27, Thomas Durussel Weston was recently feature in "Artist in Focus" by the Michigan Council of the Arts. ACE 27 was born in Detroit, 24 March 1955. He received a BA in psychology and BSW from Michigan State, and his MSW from the University of Michigan. He has been a practicing family counselor for over two years. He began to paint and sculpt with serious intent when he was twelve. Today his art is an amalgam of Dadaism, surrealism and expressionism.

SPECIAL REQUEST

This is a special request to ACE 255. When you attend the ACE Meeting on 25 June 1994, please, oh, please, leave your icpick at home.

POSTAL RESTRICTIONS

Several of our inmate members have written that they had post returned to them, or returned to sender. If you communicate to an inmate, please ask about the individual facilities postal regulations .

PAID ADVERTISEMENT

Need a place to store your ACE covers? You like colourful boxes and Russian folk art? ACE 242 has a small collection of boxes, made from an old Modovian design, and hand painted in either flower or southern Russian folk design. Boxes are in a multitude of sizes, as each one is individually hand made and painted. They are indeed one of a kind collector's items.

Small boxes - only \$15.00

Middle Size - only \$20.00

Large size - only \$30.00

Postage and shipping - \$5.00

**10 PERCENT OF ALL SALES
WILL GO INTO THE ACE
FUND.**

To order, write and make cheque payable to: Prof. T. Eggleston-Youssouppoff, 2206 Harvard Court, Riverview, FL 33569.

Identify your choice, Flower design or folk art.

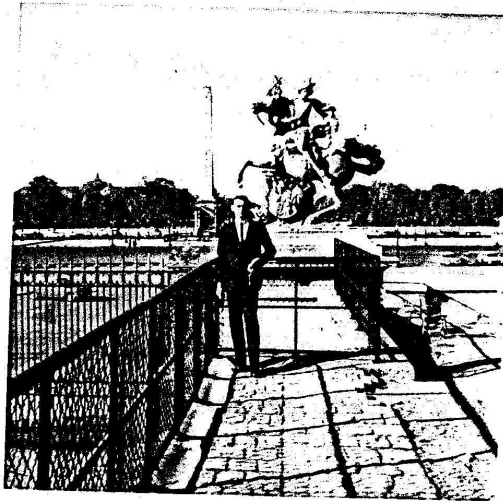
Some designs are lover's knots, Christmas' rose, rebirth, the trident, and others, plus floral.

FACES OF ACEs

This month's Faces of ACEs is a special feature to show present ACE members are they looked in years gone by. This month we will feature ACE 300, Kari Lynn Zeisloft, ACE 269, Michael Moskowitz, and ACE 242, Prof Thom Uwe. (Can you tell who is who?)



1. OH, WHAT A BEAUTIFUL BABY!



3. SINGLE - 21 - PARIS
LIFE IS WORTH LIVING!



2. ME TARZAN - WHERE'S JANE?

1 - ACE 300, 2 - ACE 269
and 3 - ACE 242