



FROM COVER TO COVER

ART COVER EXCHANGE NEWSLETTER

Address all correspondence to:

Editor

2206 Harvard Court, Ivy Estate, Riverview, FL 33569

Founder: Chris Glessner and Edith Medley

President: Don Mangus

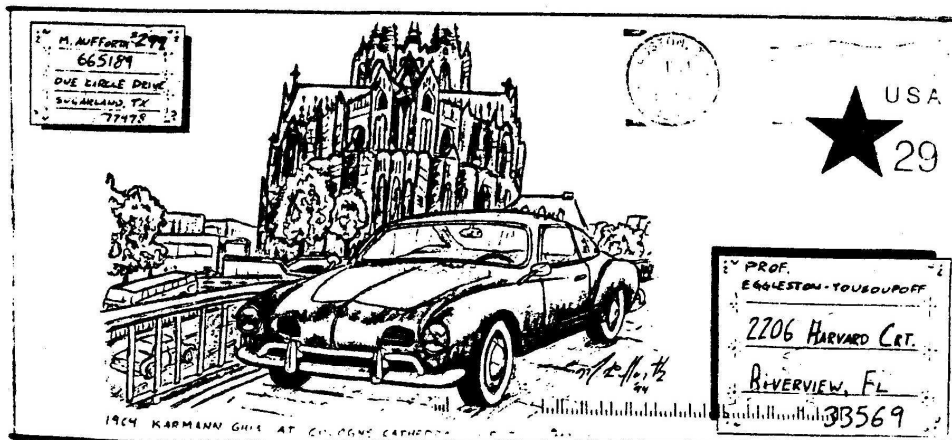
Vice President: Warren Lange

Sec/Tra: Prof. Eggleston-Youssouppoff

Editor: Prof. Eggleston-Youssouppoff

VOLUME VII September 1994 NUMBER 71

COVER OF THE MONTH



ACE Cover of the Month: ACE 299 - Mark Aufforth, Sugarland, Texas.

From the President

I would like to return , in thoughts, to the original ACE, and the reasons it was founded. The original guidelines for ACE were to obtain art work covers, establish friendships, and promote the hobby. That was in the past, today in 1994, it sounds very simple, almost too good to be true, but it is still the backbone of ACE. As we continue to grow, new members, and new activities, we will remain a friendly organization. We have members of many different backgrounds and personalities all working together to obtain art work covers, friendship and to promote our hobby. ACE is a great organization made up of great people. We can be proud of our accomplishments and growth and maintaining the original ideas of ACE.

Don Mangus
ACE 16, President

An Open Letter to my Fellow ACEers

by ACE 80, David Garrett

Wow! Was I surprised! Thanks! Being selected as the Great ACE Day Target for 1994 is quite an honor for me that I deeply appreciate. Though I may not have received as many covers as honorees in the past, I did receive covers from 27 different ACEers, many of whom sent multiple envelopes; my mailbox was plugged full three days running.

The opportunity exists for each of you ACEers in the future to be selected by your fellow members, and should the laurel ever rest upon your head, I'm sure you'll feel as equally honored as I presently do. Thanks again to all.

ATTA ACEer

ACE Member 265, Judy Ford, got into the swing of GAD VIII with producing a GAD Cover to honor Michigan, The GAD Selectee's home, and her own state (Delaware). Its a cover that would fit into several different subject collections. Way to go ACE 265. From Judy's cover: Delaware joined the union in 1787 and Michigan in 1837.

ACE OFFICIAL NEWS
NEW MEMBER **CONTRABAND IN TEXAS**

ACE 296

Ralph K. Achgill
P. O. Box 6508
Lafayette, IN 47903-6508

ACE 296 is sponsored by ACE 16.
ACE 296 is interested in hand
painted FDCs.

ACE 299

Mark Auffort ✓
665189
One Circle Drive
Sugerland, Texas 77478

ACE 299 is sponsored by a non-
club member who saw some of our
covers and recommended ACE 299
as a new member.

.....
HAPPY BIRTHDAY

ACE 298 - Betty Speirs - 1 Sept.
ACE 293 - Frank Urnick - 4 Sept.
ACE 282 - John Lesniak - 13 Sept.

.....
ON THE MOVE

ACE 261, Clinton Brazle, will be in
Africa for several weeks. ACE
288, Geroge Berdan, will be in
Michigan for a week.

ACE has been notified by the Texas
Department of Justice at the
Sugerland location that ACE covers
- that is covers with paint on them
are classified as contraband and will
be seized by the mailroom. The
covers will be opened and the
occupant will have to report to the
mailroom and sign for the contents
after examination. Their reason is
they can not x-ray a painted
envelope.

.....
MEMBERSHIP CARDS

ACE is planning to start reissuing
membership cards in 1995. We
have not issued cards in several
years, and a drive is underway for a
special and unique design from the
membership for the new card.

.....
ACE MEMBERS ABROAD

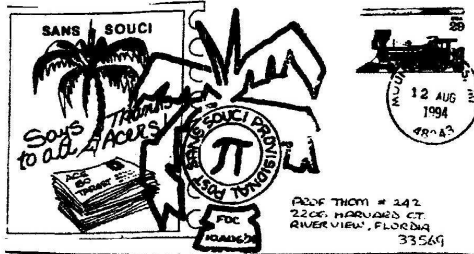
Individuals at all locations are
invited to join ACE, however,
payment of dues must be made
prior to issuing a membership
number. If non-CONUS members
desire to receive the newsletter
airpost, they will have to pay an
additional \$5.00 postage. This does
not apply to members in Canada or
Mexico. Special arrangement will
be made for currency exchange for
overseas members' dues, if needed.

VIBES FROM THE VP'S DESK

I am pleased to announce that Alex Cheek (# 149) is alive and well. In a very pleasant telephone conversation recently Alex advised that he has been working 70 hours a week and has had no time to take pen to paper. Since he opposes generic letters and duplicated artwork, we are going to have to wait for him to make some extra time for ACE. Rumors that I tried to start, that he had found a new romantic interest, unfortunately, turned out to be groundless. To his disappointment! We'll be patient Alex.

Six of your fellow ACE members have been busy the past six months trying to draft simple by-laws for the club. Thus far it has been a very enlightening experience and we are all confident that something good will come out of this for ACE. You will be hearing more.

That's all folks!
Warren # 256



Whozit/Whatzit # 2

The cover envelope of this newsletter contains 21 items "lifted" from a number of artworks by a single, very famous painter and illustrator. Your job is to tell who the artist is and just how many works of art are represented. The answer obviously will be between 1 and 21. In some instances more than one object appeared in a painting and then again, some items are representative of only one work.

To enter the contest, just sent me a card or note with: 1. The name of the artist and 2. The number of works of art represented. Even if you don't know the correct answer, you have at least a 1 in 21 chance of being correct. You might want to send 21 different entries. Send to:

Whozit/Whatzit # 2
Gary Chicoine
P. O. Box 31
Hall, NY 14463

THANKS

Special thanks to ACE 259, Gary Chicoine, for the covers for the September newsletter and the great ideas for this contest.

GO TELL IT TO THE MARINES

September is a great month, but then – all months are great for ACE. Its a great month to travel, and enjoy life, and enjoy sending and receiving ACE covers. ACE members residing above the Mason and Dixon Line will notice that their copy of the newsletter are posted from a location in Michigan. Since I am projected to trek to Michigan on 31 August, I am taking the newsletter with me and posting them from that location, and maybe you will receive the newsletter a few days earlier this month. I made a rush trip to the UK this month. I did prepare computer covers ("ACE Greetings from the UK") using the newsletter mailing list to post surface rate to ACE members. I had to made a fast trip to the Isle of Man, and on the way to the post office, we stopped in a local pub for lunch. To make a long story short, the ACE covers were left in a bag, under a table in the "Wife's Head Pub" in Douglas. When I discovered them missing, I returned; the pub owner stated he found them and gave them to a chap to take to the post office. There are no stamps on the covers. If they did get posted and they should arrive postage due – please let me know, I will sent you the cost of the postage.

ACE Membership Cards: For some reason, quite unknown to me, no ACE membership cards have been issued in years. I have located several copies of the old card. I would like to have a redrawn card – something different, but something in keeping with the principles of ACE. I am asking for the general membership to offer suggestions and drawings for the design of the new cards. To make this more tempting, I will reward the selected design with a 1930's hand drawn and watercoloured cachet cover by JET. In addition, that individual will be recognized as the designer of the ACE membership card. Send ideas and designs to editor's address on title page of newsletter. Projected date of new cards is for the renewal of membership in 1995.

I received a short letter dated 13 August 1994, informing me that the writer, an ACE member, has selected not to exchange any more ACE cover with me due to my "sarcastic junk." I regret the loss of any ACE exchange, but worst yet, I regret that an individual in ACE feels that way. I an somewhat cheeky by nature, (sarcastic – no way) and will offer an apology to any other ACE member who feels that I have offended them. ACE 242, Thom-Uwe

AN ACE COVER COLLECTOR

An ACE Cover Collector is either a gal or guy,
Who has a lot of postage stamps to buy.

They put their covers in a great big book,
In which bored in-laws have to look.

They look at their covers whene'er they can,
With a beam of glory on their pan.

They simply shun the ornery gink,
Who thinks their minds are on the blink.

An ACE Cover Collectors are so philatic,
they don't mind the sound of static.

Nor do they hear the telephone's roar,
or the salesman at the door.

I think they're swell, a human bein'
Tho others might say they's lost their reason.

But the other are wrong, I swear by Hector,
Because even I am an ACE Cover Collector.

(Presented by ACE 242 for your enjoyment.)

ACE 200, Richard D. Schark, or Bartell, IL, likes sharks and mermaids. He is also interested in license plates. ACE 177, Gary Hudeck, of Parma, OH, likes first day covers and autographs. Gary is specially interested in first day of issue of the W.C. Fields stamp. ACE 300, Kari Lynn Zeisloft of Newark, DE, likes arts and crafts, and most collectibles especially carousel horses and fire fighters. ACE 290, Frank Denton of Seattle, WA, likes a lot of things to include reading, walking and traveling. Frank enjoys "birding." Want to know what "birding" is? Then send Frank an ACE letter to find out.

FACES OF ACES



**ACE 270 - "PACIFICA"
Richard Shuey**



**ACE 186 Florence Gillespie
at the Department of Delaware
VFWA Convention, 1994**



**ACE 269 - Michael Moskowitz
and his son Chris.**

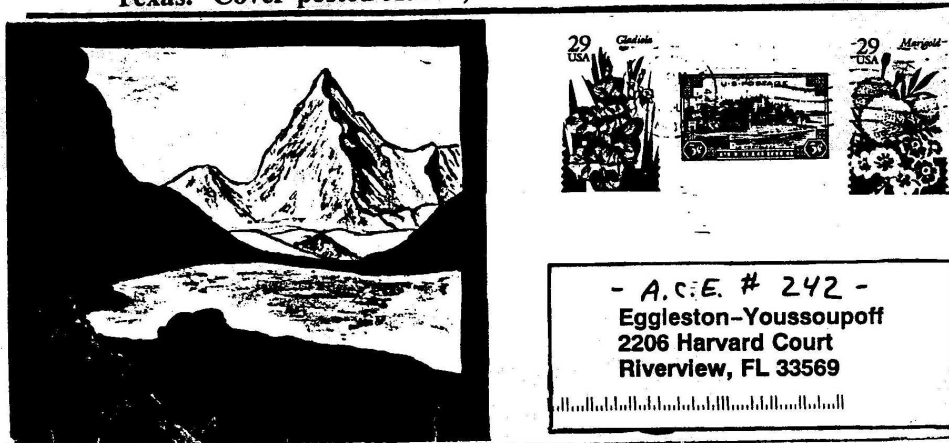
ACE GOES TO THE PICTURES

- ACE PARK starring Rudy Viol and Jan Cramer
- REVENGE OF THE ACE WIFE starring Dixie Glessner.
- THREE MEN AND AN ACE COVER starring Jim Norris, Don Thompson and Boxcar Poppell.
- ACE COVER ROCK starring Don Mangus
- THE THREE FACES OF ACE with David Garrett as David Garrett.

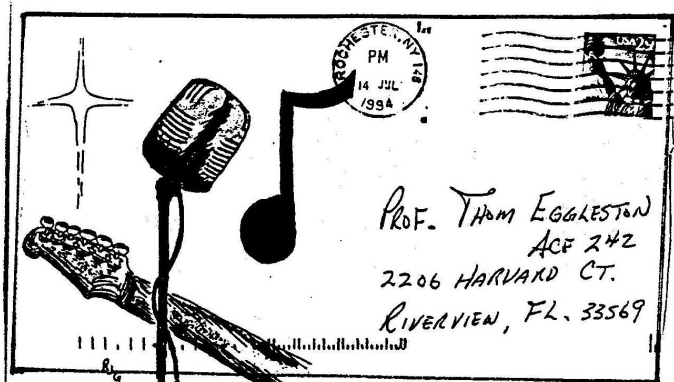
FROM THE POST BAG



ACE Cover from ACE Member 179, Jim Eckert, Bastrop, Texas. Cover posted Austin, Texas.



ACE Cover from ACE Member 246, Rudi Viol, Brook Park, Ohio. Cover posted Cleveland, Ohio.



ACE Cover from ACE Member 171, Bob Grier, Rochester, New York.

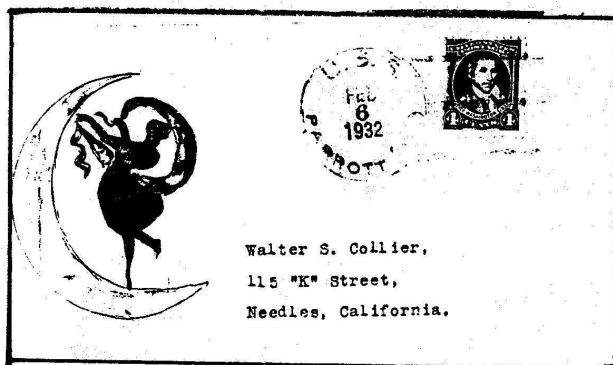
COVERS FROM DAYS GONE BY

The following Naval covers might be of interest to ACE members to show what was done by other than ACE collectors several years ago.

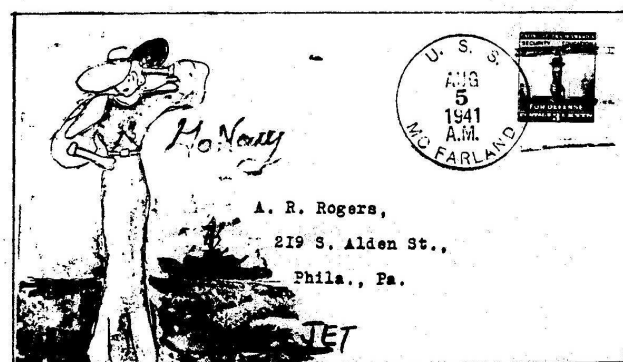
1. USS SAPEIC – Watercolour of boy discovering a star fish. 1932.



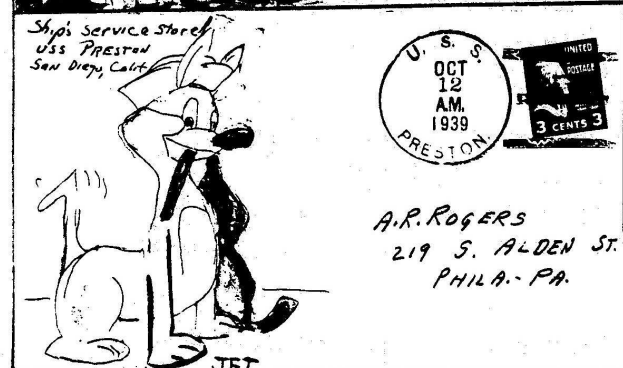
2. USS PARROTT- Girl dancing on the moon – 1932. Watercolour but age damaged – still charming.



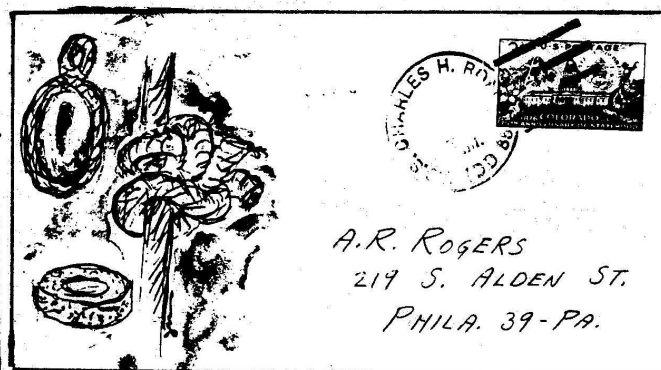
3. USS MCFARLAND – Woman and ship at sea. Watercolour 1941.



4. USS PRESTON – Dog wearing naval cap and hold his prize in his mouth, 1939. Watercolour



5. USS CHARLES H. ROGERS – Ropes and knots – watercolour.



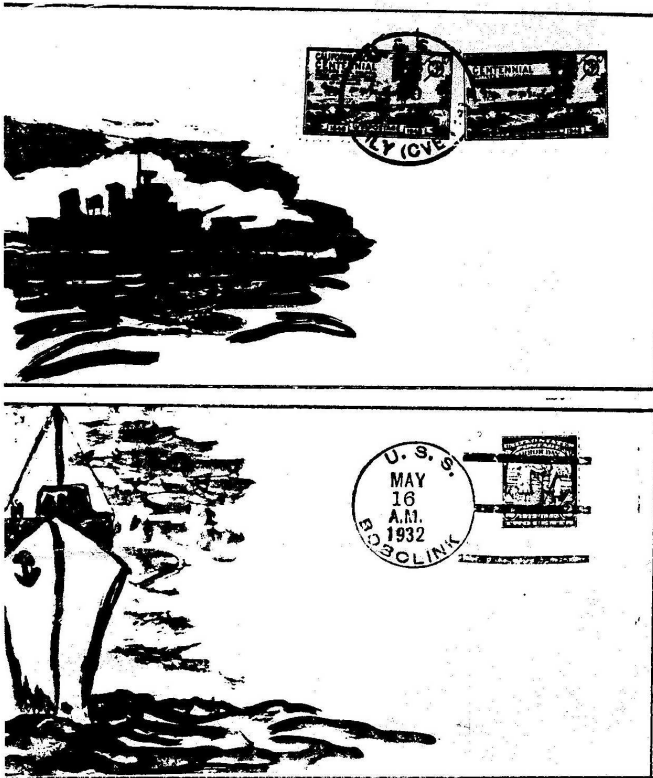
6. USS HELENA - Watercolour, ship at sea and shooting star, 1940.

7. USS HOLLAND - Watercolour of a ship - 1939.

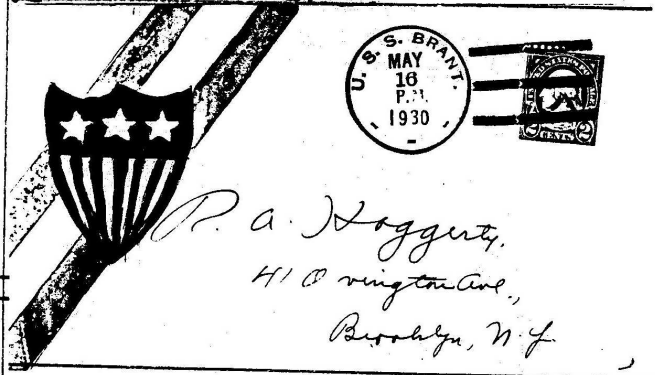
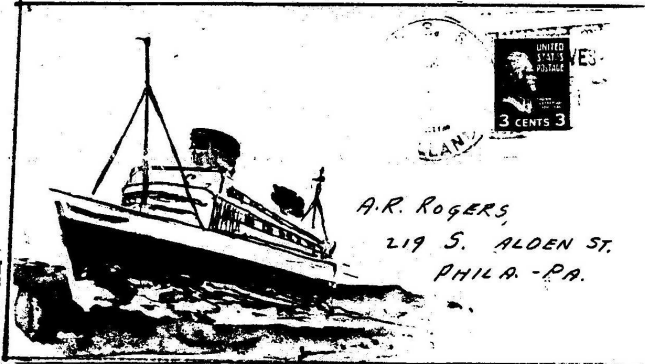
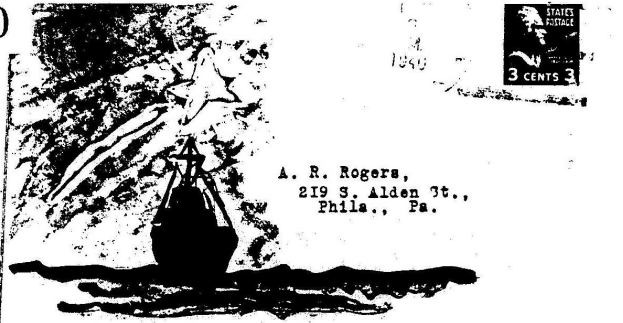
8. USS BRANT - Watercolour of a three star crest on red and white bars. 1930.

9. USS SICILY - Watercolour of ship at sea - 1940.

10. USS BOBOLINK - Watercolour, front of ship - 1932.



10



Watercolour drawings make a great cover. After a few years, the colours mellow to a great hue. (Wish, I could use watercolours, mine sort of looks like finger painting. ACE 242)

One of the good side effects of old covers, is once in a while, you get to read other people's letter still tucked inside. In Cover Number 9 above was the following: "Helen Sweetie,the drawing was done by Chuck. Chuck sleeps in the so called bed above mine. He is strange. He would make a great catch for your sister Betty.....Steve."

Other ACE members are invited to sent copies of covers in their collection to the editor to be shown in future newsletter.